



*Excellence and Innovation
in Sheet Metal Services*

FLUE KITS AND COMPONENTS

***Wholesale Product Catalogue
Effective August 2010***

www.enieng.co.nz



Excellence and Innovation in Sheet Metal Services

FLUE KITS AND COMPONENTS

Wholesale Product Catalogue Effective August 2010

INDEX

Flue Kits - Free Standing/Inbuilt	3
Flue Shield Kits - Full/Half	3
Flue Pipes and Liners	4
Offsets	4
Cowling	5

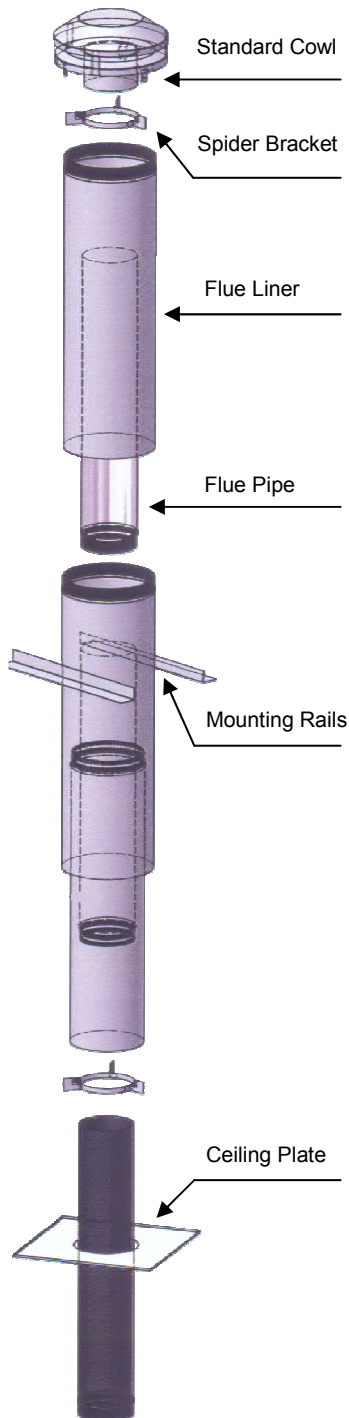
ENI ENGINEERING - Contact Details

Phone: 64 3 349 7052
Fax: 64 3 349 7053
Email: jeremey.wood@enieng.co.nz
Web: www.enieng.co.nz
PO Box: 37049, Christchurch 8245
Factory: 18 Produce Place,
Christchurch 8245, New Zealand



FLUE KITS - Free Standing/Inbuilt

FREE STANDING KITSETS -
Include all components



Flue Kits readily available in stock:

All sizes refer to internal diameter of flue pipe	Size (mm)	Part No.
Free Standing - Black Painted Kit	150	EXA-10020
Inbuilt Kit	150	EXA-10005

Flue Kits readily made upon order:

Free Standing - Black Painted Kit	175/180	EXA-10023
Free Standing - Stainless Steel Full Kit (Black Painted)	180	EXA-10007

If you require different sizing, we can also customise these to suit your needs

FLUE SHIELD KITS - Full/Half

The standard colour for these are black, however, we can powder coat them any colour you desire from our powder coating plant onsite.

Flue Shield Kits readily available in stock:

	Size (mm)	Part No.
Full Shield - Enamel	1200 x 150/175	EXA-10013
Half Shield	1200 x 150/175	EXA-10015

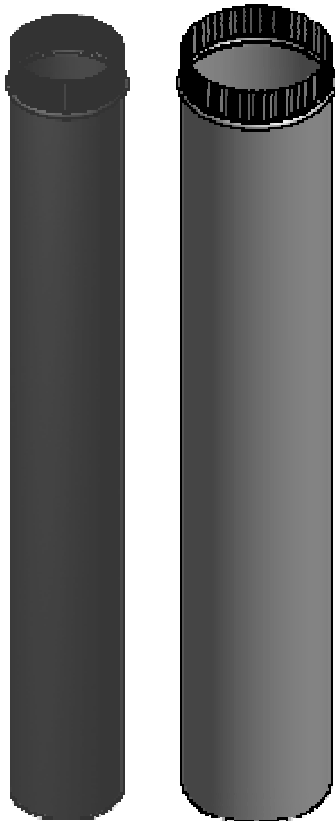
If you require different sizing, we can also manufacture these to suit your needs



FLUE PIPES AND LINERS

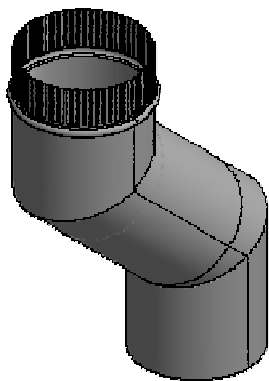
Flues Pipes and Liners readily available in stock:

Sizes refer to internal diameter x length of Flue Pipe/Liner	Size (mm)	Part No.
Flue Pipe - Stainless	150 x 1200	EXS-11003
	150 x 600	EXS-11004
	180 x 1200	EXS-11005
	180 x 600	EXS-11025
	200 x 1200	EXS-11033
	250 x 1200	EXS-11034
Flue Pipe - Stainless (Black)	150 x 1200	EXS-11032
	175 x 1200	EXS-11020
Flue Liner - Galvanised	200 x 1200	EXS-11007
	200 x 600	EXS-11008
	230 x 1200	EXS-11009
	230 x 600	EXS-11037
	250 x 1200	EXS-11010
	250 x 600	EXS-11011
	280 x 1200	EXS-11012
Vented Liner - Galvanised - Painted	250 x 1200	EXS-11017
	250 x 1200	EXS-11018



Flue Pipes and Liners readily made upon order:

Flue Pipe - Stainless	125 x 1200	EXS-11030
	125 x 600	EXS-11031
Flue Liner - Galvanised	300 x 1200	EXS-11013



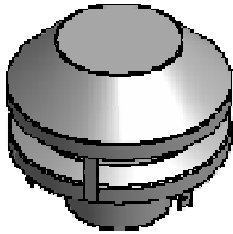
OFFSETS

We have the ability and manufacturing capabilities to create offsets in a variety of sizes to ensure your needs are met. These include:

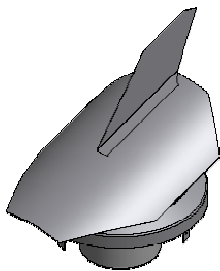
- **Standard Offsets**
- **Triple Offsets** - To requirements
- **Tee Sections**



COWLING



Fixed (Standard) Cowl



Revolving Cowl

We offer a wide range of cawling which can be tailored to suit any requirements. We manufacture fixed, cone, and revolving cowls which come standard in stainless steel but can be powder coated any colour to match your roof.

Cawling readily available in stock:

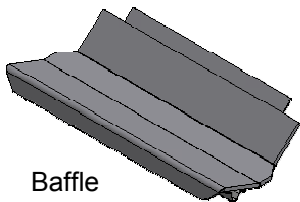
- **Cowl - Fixed** (Standard)
- **Cowl - Revolving**

Cawling readily made upon order:

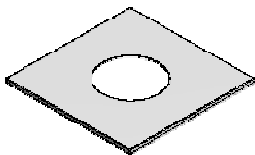
- **Cowl - Cone**

All cawling can be manufactured to suit your specific sizing requirements.

OTHER FLUE COMPONENTS



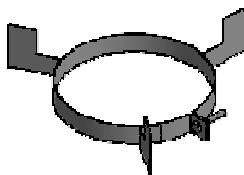
Baffle



Standard (white) Ceiling

We manufacture everything you need for a high quality flue system. Anything you require can be customised to meet your specific needs, for example; sizing, colouring, and angle (degrees) of components.

- **Floor Penetration Kits**
- **Baffles for new and obsolete fires**
- **Floor Plates**
- **Ceiling Plates**
- **Cowl Bands**
- **Spider Brackets**



Spider Bracket